

ISLANTILLA

CICLOTURISM



ENJOY ISLANTILLA

With more than 3,000 hours of sunshine a year and an average temperature of 22 degrees, Islantilla combines relaxation, nature and outdoor sports. This area, which includes Isla Cristina, Lepe and nearby villages, offers more than 600 kilometres of cycling and hiking routes through golden sandy beaches, pine-covered dunes and marshlands washed by the Atlantic Ocean. Much of the coastline is part of a protected Natural Park, with unspoilt beaches and river mouths.

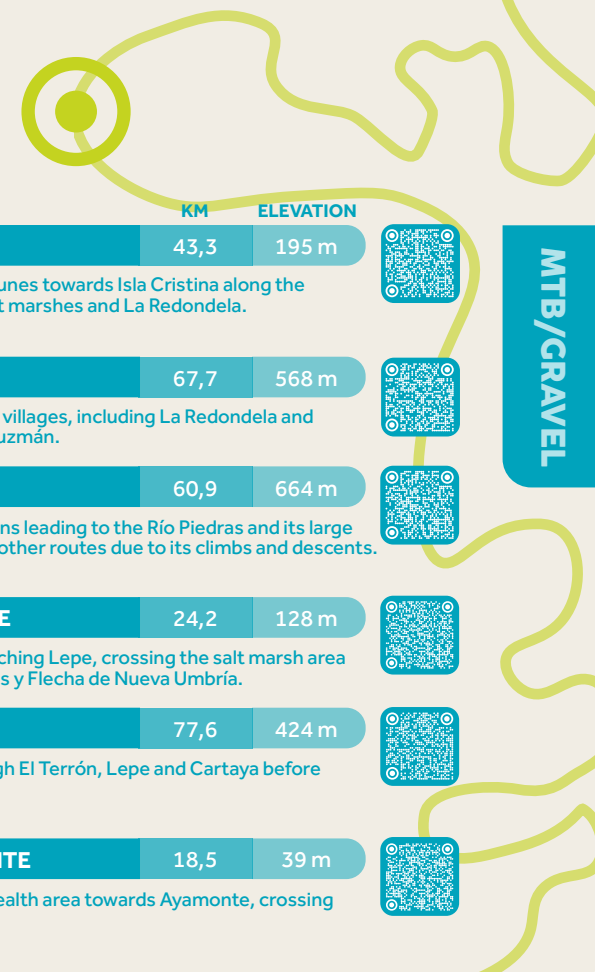
The Isla Cristina Marshes were formed by sediments from the Guadiana River, which marks the border between Spain and Portugal, very close to the mouth of the Piedras River and the Flecha de Nueva Umbría. Cycling through this landscape means passing salt flats, reed beds and waterways inhabited by water birds and flamingos. It is also possible to cross the rivers by boat or ferry with your bicycle to continue the route. Beyond the beaches lie pine forests and strawberry fields, as some of Spain's finest sun-ripened strawberries come from Huelva.



CARRETERA

	KM	ELEVATION	
ISLANTILLA - RÍO PIEDRAS RESERVOIR	70,7	443 m	
Route starting in Islantilla and reaching the Río Piedras Reservoir. Built in 1968, it has a capacity of 60 hm ³ of water. The reservoir covers an area of 800 hectares and supplies water to the entire western coast of Huelva.			
ISLANTILLA - EL PORTIL - ALJARAQUE	73,9	568 m	
Route starting from Islantilla, following flat sections through pine forests and coastal roads parallel to the sea, leading through El Portil to Aljaraque.			
ISLANTILLA - SANLÚCAR DE GUADIANA	115,5	1022 m	
A route from Islantilla with spectacular views. Due to the elevation gain, experience is recommended. From Sanlúcar, riders can enjoy magnificent views over the river towards the Portuguese town of Alcoutim.			
ISLANTILLA - ISLA CRISTINA MARSHES	62,3	218 m	
Route starting in Islantilla and crossing the impressive salt marshes and wetlands of the Isla Cristina Marshes Natural Area.			

RUTAS CICICLISTAS

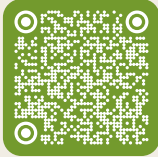


	KM	ELEVATION	
ISLANTILLA - ISLA CRISTINA	43,3	195 m	
Route starting in Islantilla and crossing the dunes towards Isla Cristina along the Chameleon Route, returning through the salt marshes and La Redondela.			
ISLANTILLA - SAN SILVESTRE	67,7	568 m	
Route from Islantilla passing through several villages, including La Redondela and Villablanca, until reaching San Silvestre de Guzmán.			
ISLANTILLA - RÍO PIEDRAS	60,9	664 m	
Route from Islantilla through different sections leading to the Río Piedras and its large reservoir. It is slightly more demanding than other routes due to its climbs and descents.			
ISLANTILLA - COASTAL TRAIL - LEPE	24,2	128 m	
An easy route starting from Islantilla and reaching Lepe, crossing the salt marsh area of the Paraje Natural Marismas del Río Piedras y Flecha de Nueva Umbría.			
ISLANTILLA - EL ROMPIDO (MTB)	77,6	424 m	
Route starting in Islantilla and passing through El Terrón, Lepe and Cartaya before arriving at El Rompido.			
ISLANTILLA - GREENWAY - AYAMONTE	18,5	39 m	
Route starting from the Islantilla Commonwealth area towards Ayamonte, crossing an area rich in birds and lagoons.			

MTB/CRAVEL

ROUTE 1

Islantilla Lepe El Rompido

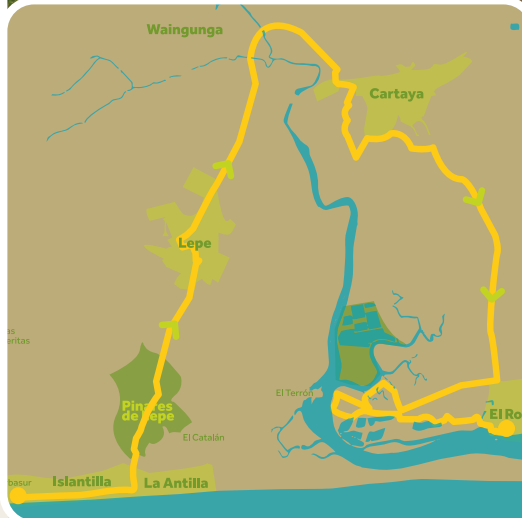


You will enjoy a cycling route combined with tourist experiences while discovering our wonderful natural surroundings.

The route includes visits through the urban centre of Lepe with key stops such as: Chapel of San Cristóbal, Museum/House of the Brotherhood of Virgen de la Bella, Parish Church of Santo Domingo de Guzmán, Plaza de España.

The route continues along the Coastal Greenway towards Presa de los Machos, with the option of visiting Waingunga Aventura, one of the leading active tourism centres in the province of Huelva.

You will then arrive at El Rompido, cycling through the Río Piedras Marshes and Flecha de Nueva Umbría, where you can enjoy panoramic views of Puerto del Terrón and the Bella Pilgrimage Grounds.



ROUTE 2

Islantilla Isla Cristina



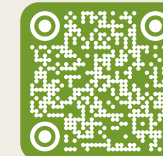
During the route, highlights include the landscapes of the Isla Cristina Pine Forests and Beaches, Isla Cristina Marshes and the Coastal Greenway.

Visits include: USISA canned fish and salted products factory, The "Casita Azul" environmental interpretation centre, The Tidal Mill, Salinas del Alemán

Other interesting experiences include a boat trip along the Ría Carreras and a visit to the Lonja de Isla Cristina (the second largest fish market in Spain and the largest in Andalusia in terms of daily fresh fish catches).



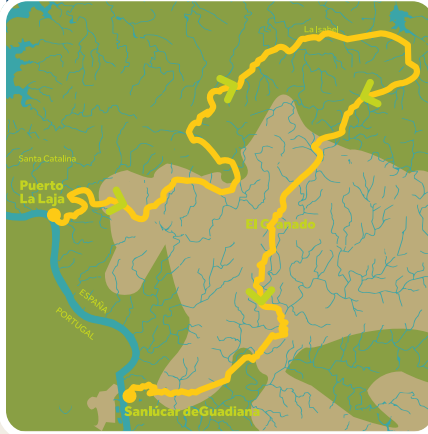
Más experiencias en:
turismo.lepe.es



Más experiencias en:
islacristina.org

ROUTE 3

Puerto de la Laja Sanlúcar de Guadiana



This route along the Guadiana River combines mining history with border landscapes. Highlights include the Port of La Laja, El Granado Mill and Sanlúcar de Guadiana, where its castle and cross-border zipline connect with Portugal.

To complete the day, a visit to the municipality of Ayamonte is recommended — a historic fishing town embracing the mouth of the river, offering rich gastronomy and privileged views of the Atlantic Ocean from Isla Canela.

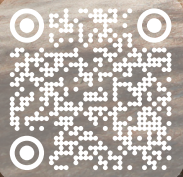


HIKING

Routes for every taste

Discover the pleasure of hiking in Islantilla, a privileged enclave on the Costa de la Luz where the sea, pine forests and dunes come together in harmony. Here you will find trails suitable for all levels: from family walks to routes perfect for training or reconnecting with nature.

Here, green tourism is experienced sustainably, combining sport, relaxation and respect for the environment.



DISCOVER ISLANTILLA ON A BIKE

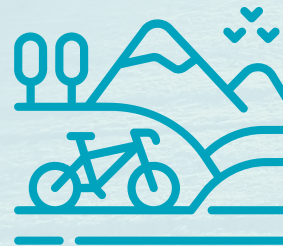


To explore the more adventurous side of Huelva, there are numerous dirt tracks, pine forests, dunes and natural trails ideal for those wishing to lose themselves in this diverse and spectacular natural environment.



ON ROAD ROUTES

Road cycling enthusiasts can enjoy long routes through coastal landscapes, marshlands and nearby towns. These routes are ideal for reaching higher speeds and discovering the area's more urban side.



MTB/GRAVEL ROUTES

To discover the more adventurous side of Huelva, there are countless dirt tracks, pine forests, dunes and natural trails, ideal for those who choose to lose themselves in its diverse and spectacular natural surroundings.



FAMILY ROUTES

Families have their place too. Gentle, safe and enjoyable routes for both adults and children, as well as for those who are new to cycling.



CICERONE

SCAN AND
CUSTOMISE
YOUR VISIT



ISLANTILLA

SCAN TO
ACCES OUR
WEBSITE

**SPORTS SERVICE OF THE
ISLANTILLA COMMONWEALTH**

Active Centre of Islantilla
Avda Riofrío esquina Calle Garza
21449 Islantilla (Huelva)
Tlfnº: +34 959 646 028
deportes@islantilla.es
www.islantilla.es/cycling

